

Dear customer, thank you for purchasing our product. Please read the following instructions carefully and follow them to serve you safely and to your full satisfaction. This will prevent misuse or damage. Avoid unprofessional handling of this appliance and always observe the electrical appliance usage guidelines. Keep the instruction manual carefully.

GENERAL INFORMATION

The alarm checks the air for the presence of smoke from a fire. It does not detect heat, gas or fire. If the smoke alarm is properly installed and maintained, it will trigger an alarm at the initial stage of a fire. In the event of a fire, this can give you the extra seconds needed to leave the house and call the fire brigade. The alarm is designed to detect smoke. This device cannot prevent a fire. Read the instructions carefully before using the smoke detector.

TECHNICAL PARAMETERS

Power	Alkaline battery DC 9V
Dimensions	110 x 35 mm
Volume	85 dB
Sensor type	Photoelectric
Operating temperature	+4 to + 38 °C
Detector lifetime	10 years



BATTERY AND REPLACEMENT

Under normal conditions of use, the battery lasts at least one year. If the battery is low or almost low, the detector will indicate this with an audible signal - a beep. This indicator will beep at intervals of 30-40 seconds for at least 30 days. If the device emits this signal, replace the battery. Use 9V alkaline batteries, type 6LR61. Battery placement is very simple: remove the mounting bracket on the back and attach the battery.



TEST

The alarm is equipped with a test button. Press it until the alarm sounds. When the button is released, the audible signal stops. Test the alarm at least once a week, but always after changing the battery or cleaning. The alarm should be dusted regularly to remove dust particles. The cover must not be unscrewed during cleaning. If the alarm does not work properly, contact your dealer or importer.

ASSEMBLY

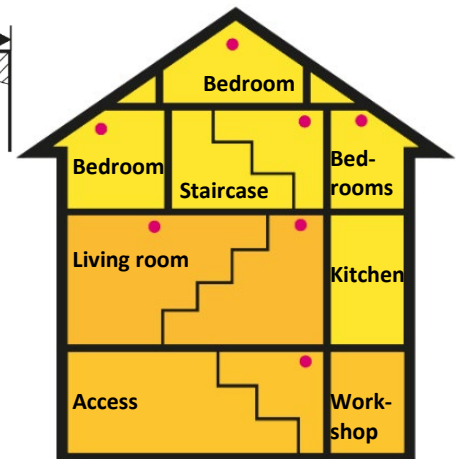
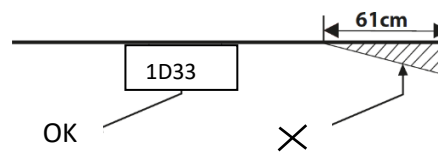
Do not mount the alarm in a hard to reach place for the test button, battery change and maintenance. Attach the bracket to the selected location using the screws provided. Pay attention to the following instructions and drawings. Carefully tighten the alarm bracket. Mount the alarm in the centre of the room ceiling.

Where is the best place to place smoke detectors?

- At least 1 in each room
- One on each floor
- In the hallway, in the stairwell.
- Outside each bedroom door
- In each bedroom (if you sleep with the door closed)
- In the living room
- In storage areas or areas with electrical equipment

The alarm must not be installed in:

- In a room where the temperature may fall below 4 °C and exceed 40 °C
- In areas with high humidity
- Just outside the door or window
- Near a fan or radiator.



IMPORTANT

Placing a smoke alarm is part of your fire protection. Always ensure that there is an evacuation plan and discuss it with other members of the household or property. If there is any doubt about the cause of the alarm, you should assume that the alarm is caused by an actual fire and evacuate the dwelling immediately.

SIGNALS

In the case of normal operation of the detector, the red LED flashes once every approx. 45 seconds. During an alarm, this LED flashes continuously with a warning sound. In low battery mode, the LED flashes once every 45 seconds with a simultaneous beep.

IMMEDIATE ACTION IN THE EVENT OF AN ALARM

Leave the house or apartment immediately according to the escape plan you have established. Every second counts, so don't waste time picking up clothes or searching for valuables. When leaving a room, do not open the door unless you have first touched its surface. If it is hot or if you see smoke billowing from under the door, do not open the door! Instead, use another escape route. If the surface of the door is cool, push your shoulder against the door and open it slightly; be prepared to close it immediately if heat and smoke should penetrate.

CLEANING

Before cleaning the detector, remove it from the holder and disconnect it from the battery; do not use aggressive cleaning agents. Use a vacuum cleaner hose to remove dust. Do not paint the detector with any paints; it is essential to maintain proper airflow through the device.

STATEMENT

The importer shall not be liable for any damage caused by failure to follow the instructions in the user manual. The importer is not liable for damage caused by improper handling, use or wear and tear. The importer is not liable for damage caused by equipment failure and subsequent fire or if the smoke alarm signal does not sound during smoke or fire.

APPENDIX

The product complies with the requirements for placing on the EU market, conforming to EN 14604:2005+AC:2008. The product has been issued with a Declaration of Performance in accordance with Regulation (EU) No 305/2011 of the European Parliament and of the Council. Recommended date of detector replacement: within 10 years from the date of manufacture. The date of manufacture is printed on the product label.

Name and number of the notified body providing certification for the EU: BSI Group The Netherlands B.V. Certified body number 2797. Certificate number: 2797 CPR 550646

Importer: Solight holding s.r.o, Hradec Králové, Na Brně 1972.

Manufacturer: NINGBO HI-TECH PARK JABO ELECTRONICS CO., LTD, Building 6, NO.799 Lingyun Road, Ningbo Hi-Tech Park, Ningbo, China. Made in China.

The product has been issued with a CE Declaration of Conformity and a Declaration of Performance in accordance with the applicable regulations. On request from the manufacturer: info@solight.cz or download www.solight.cz/en

