

Thank you for purchasing our equipment. Please read this manual carefully and heed the safety warnings and instructions before installing, using or repairing the equipment. This will ensure not only the protection of persons, but also the long life of the equipment.

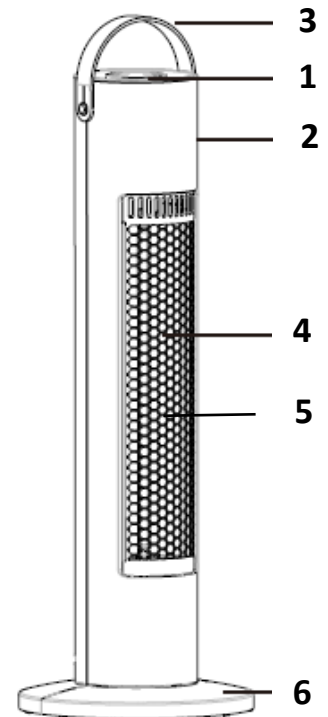
## TECHNICAL PARAMETERS

|              |             |
|--------------|-------------|
| Power supply | 230V / 50Hz |
| Power        | 300/600W    |
| Rotation     | 45°         |
| IP coverage  | IP20        |
| Cable length | 130cm       |

The device has overheating and tip-over protection.

## DESCRIPTION OF EQUIPMENT

1. Control knob
2. Front casing
3. Handle
4. Metal mesh
5. Carbon fibre heater
6. Base

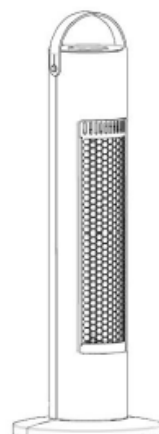
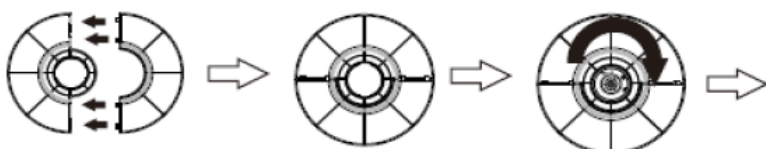


## SAFETY NOTICE

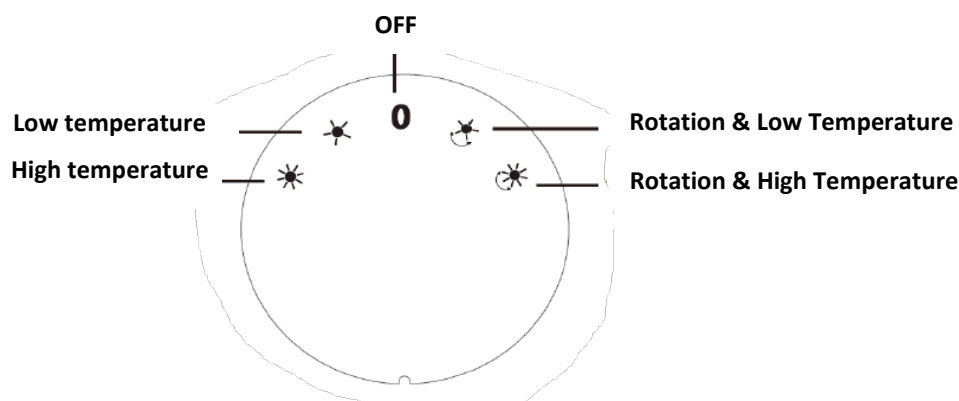
- Check that the power supply complies with the label on the product.
- Do not touch hot surfaces, use handles or knobs when working.
- Protect the product from water or other liquids.
- Do not leave this product unattended during operation.
- Disconnect the product from the mains before cleaning or maintenance.
- Do not use the appliance if the power cord or plug is damaged. Replacement must be carried out by professional staff.
- Keep this product at least 1 m away from combustible objects.
- Do not pull the plug out by the cable, otherwise the plug may be damaged.
- The manufacturer assumes no responsibility for damage caused by operation not in accordance with these instructions or other improper use or handling of the equipment.
- Do not use this device in the bathroom or near the swimming pool.
- Do not cover the device with anything.
- Keep a safe distance of 50 cm from the top and sides and 120 cm in front of the device.
- Use of the equipment in a room with explosive gases such as gasoline or other types of flammable adhesives, sprays or solvents is strictly prohibited.
- Do not allow children to operate this product.
- Do not use the device outdoors.
- Do not repair, refurbish or disassemble the equipment, if the equipment is damaged, do not use it!
- Wait until the product has cooled down before proceeding.
- Do not throw away the original packaging that could be used to store the product.
- Disposal of packaging material should be carried out in an appropriate manner.
- At the end of its useful life, dispose of it in a designated place; the device does not belong in normal household waste.

## INSTALLATION

1. Remove the device from the box
2. Fold the lower base
3. Place the base on the device and stand it up



## CONTROL PANEL



1. Switch the knob to select the intended function and the indicator will light up accordingly.
2. Heating level: 2 heating levels, Low/High.
3. Rotation: rotation option + High or low heating level.

## MAINTENANCE AND STORAGE

Before cleaning or maintenance, turn the product off by pressing the ON/OFF button, unplug it from the power outlet and wait until it cools down.

Important note: Do not disassemble the device to clean the inside of the product.

### Exterior cleaning:

- Use a clean, soft cloth or neutral solvent to clean the outer surface.
- Do not use caustic or alkaline solvents to clean this product.
- Do not clean the inside of the product (circuit board, motor, etc.) with any solvent and ensure that water does not enter the control circuit in the event of a short circuit.
- Do not wipe the outside of the product.
- Never immerse the product, power cord or plug in water.

### Seasonal maintenance:

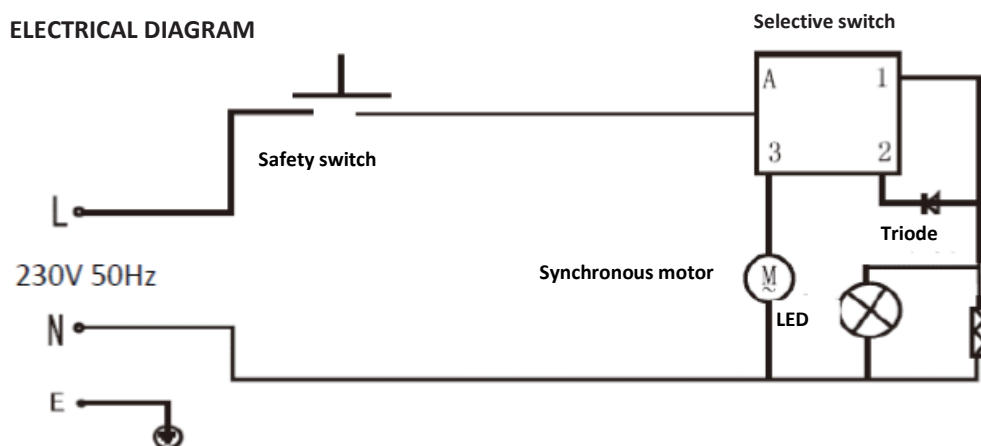
- At the end of the season, clean the product before storing.
- Clean the outer surface according to the above instructions.
- Fit the handle correctly on the back of the product.
- Cover the product and store it upright in a cool, dry place.

### Warning:

If it is a product that is used in the home, it should be kept safe:

If you find that this product is not working or has unusual odours, disconnect the power immediately and inform our after-sales service department.

## ELECTRICAL DIAGRAM



The product has been issued with a CE declaration of conformity in accordance with the applicable regulations. On request from the manufacturer: [info@solight.cz](mailto:info@solight.cz), or downloadable from [www.solight.cz/en](http://www.solight.cz/en).



**SOLIGHT**

Solight Holding, s.r.o., Na Brně 1972, Hradec Králové 500 06, Czech Republic.