

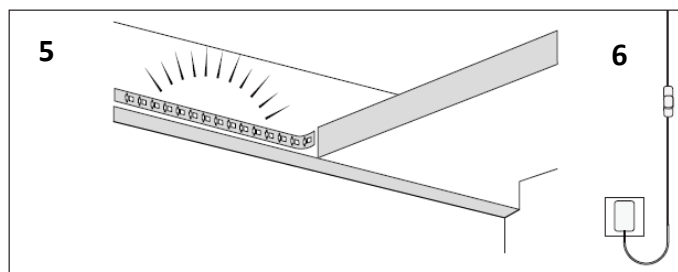
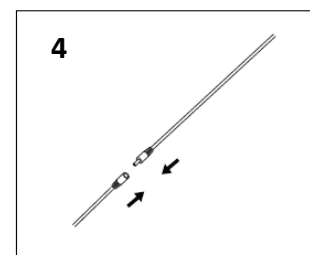
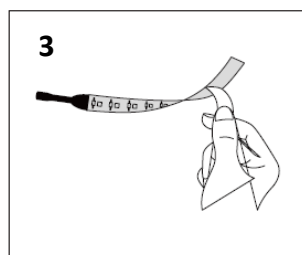
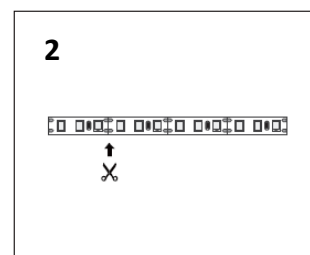
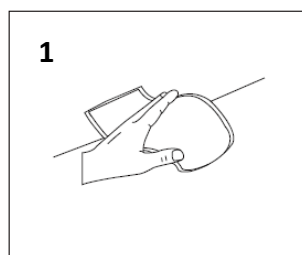
Thank you for purchasing our equipment. Please read this manual carefully and heed the safety warnings and instructions before installing, using or repairing the equipment. This will ensure not only the protection of persons, but also the long life of the equipment.

## TECHNICAL PARAMETERS

|                          |                                  |
|--------------------------|----------------------------------|
| Power                    | Adapter AC 230V / DC 12V, 2000mA |
| Luminous flux            | 120lm                            |
| LED                      | 60 x LED/m, max. 4.8W/m          |
| Chromaticity temperature | 3000K                            |
| IP coverage              | IP65                             |

## INSTALLATION

1. Wipe the surface on which you will install the tape.
2. Measure and cut the desired length
3. Uncover the adhesive side of the tape
4. Connect the supply cable
5. Stick the tape on the surface
6. Connect the power cord to the plug



## NOTICE

- If the device is damaged, do not use it.
- The belt can be shortened as needed.
- For maximum durability and performance, we recommend installing the strips in aluminium profiles.

At the end of its service life, the luminaire must be replaced in its entirety and disposed of in a designated place. This product contains a light source that for design reasons cannot be removed for verification and therefore the entire product is considered a light source. The power cord cannot be replaced if damaged, the unit must no longer be used.

The product has been issued with a CE declaration of conformity in accordance with the applicable regulations. On request from the manufacturer: [info@solight.cz](mailto:info@solight.cz), or downloadable from [www.solight.cz/en](http://www.solight.cz/en).

