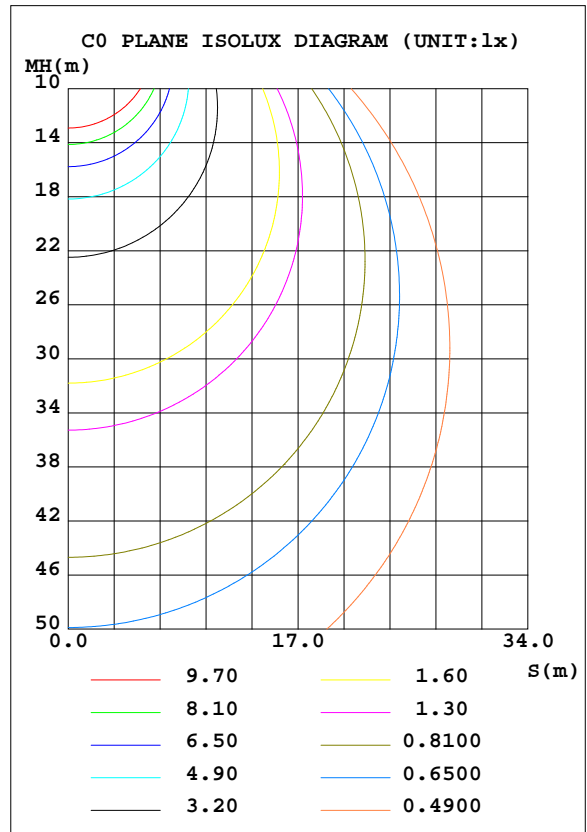
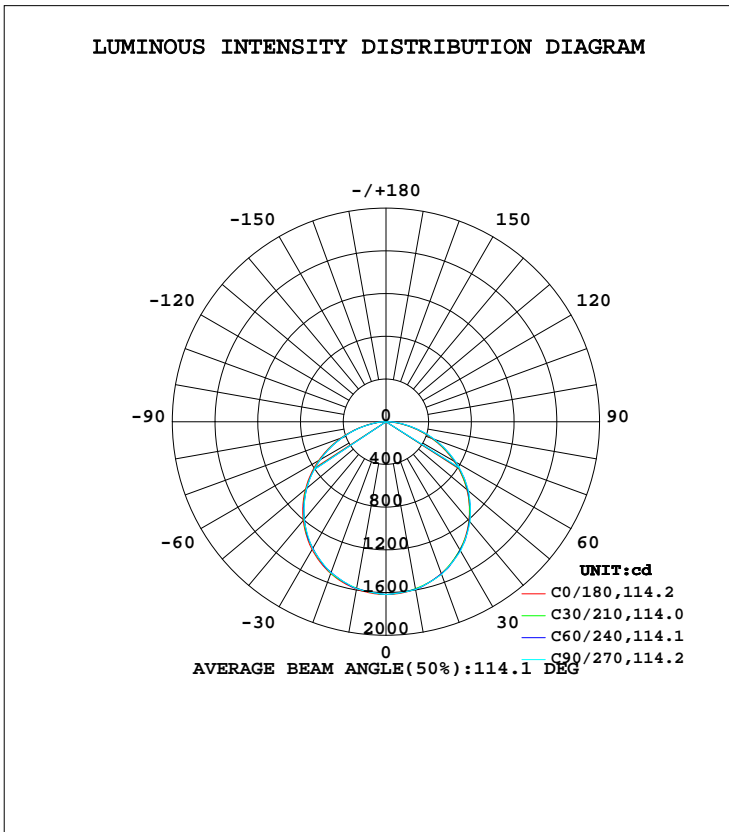


LUMINAIRE PHOTOMETRIC TEST REPORT

Test:U:220.4V I:0.2773A P:59.98W PF:0.9813 Freq:50.00Hz Lamp Flux:4703.93x1 lm		
NAME:	TYPE:LED	WEIGHT:
SPEC.:	DIM.:	SERIAL No.:1
MFR.: EVERFINE	SUR.:	Shielding Angle:

DATA OF LAMP		PHOTOMETRIC DATA Eff: 78.43 lm/W			
MODEL		I _{max} (cd)	1618	S/MH(C0/180)	1.27
NOMINAL POWER(W)		LOR(%)	100.0	S/MH(C90/270)	1.26
RATED VOLTAGE(V)	220	TOTAL FLUX(lm)	4703.9	η UP, DN(C0-180)	0.0,50.7
NOMINAL FLUX(lm)	4703.93	CIE CLASS	DIRECT	η UP, DN(C180-360)	0.0,49.3
LAMPS INSIDE	1	η up(%)	0.0	CIBSE SHR NOM	1.25
TEST VOLTAGE(V)	220	η down(%)	100.0	CIBSE SHR MAX	1.35



C Range: 0 - 360DEG
 C Interval: 5.0DEG
 Test Speed: HIGH
 Temperature:25.3DEG
 Operators:W.H
 Test Date:2016-07-26

γ Range: 0 - 90DEG
 γ Interval: 0.5DEG
 Test System:EVERFINE GO-2000A_V1 SYSTEM V2.0.352
 Humidity:65.0%
 Test Distance:9.100m [K=1.0000]
 Remarks: 唐 6060

ZONAL FLUX DIAGRAM

ZONAL FLUX DIAGRAM:

γ	C0	C45	C90	C135	C180	C225	C270	C315	γ	Φ zone	Φ total	%lum, lamp
10	1591	1589	1595	1588	1591	1583	1587	1583	0- 10	152.7	152.7	3.25,3.25
20	1513	1513	1521	1513	1512	1501	1506	1502	10- 20	438.8	591.5	12.6,12.6
30	1385	1389	1397	1388	1383	1371	1374	1373	20- 30	668.8	1260	26.8,26.8
40	1208	1216	1224	1217	1206	1195	1193	1196	30- 40	811.9	2072	44.1,44.1
50	988.5	1001	1009	999.7	984.4	972.2	970.5	976.0	40- 50	847.7	2920	62.1,62.1
60	733.8	747.5	757.3	747.6	729.5	715.6	712.2	718.1	50- 60	769.6	3689	78.4,78.4
70	456.6	473.3	482.8	471.6	451.4	437.2	433.4	441.3	60- 70	588.1	4278	90.9,90.9
80	185.7	204.1	205.7	202.1	180.6	171.4	159.4	173.9	70- 80	335.7	4613	98.1,98.1
90	1.264	2.011	1.311	1.437	0.8165	1.540	1.540	1.540	80- 90	90.65	4704	100,100
100									90-100			
110									100-110			
120									110-120			
130									120-130			
140									130-140			
150									140-150			
160									150-160			
170									160-170			
180									170-180			
DEG	LUMINOUS INTENSITY:cd									UNIT:lm		

Conical surface Flux(90deg): 2498.7 lm

%lum = 53.1%
%lamp = 53.1%

Conical surface Flux(120deg): 3689.5 lm

%lum = 78.4%
%lamp = 78.4%

C Range: 0 - 360DEG
C Interval: 5.0DEG
Test Speed: HIGH
Temperature:25.3DEG
Operators:W.H
Test Date:2016-07-26

γ Range: 0 - 90DEG
γ Interval: 0.5DEG
Test System:EVERFINE GO-2000A_V1 SYSTEM V2.0.352
Humidity:65.0%
Test Distance:9.100m [K=1.0000]
Remarks: 唐 6060

UGR(Unified Glare Rating) Table

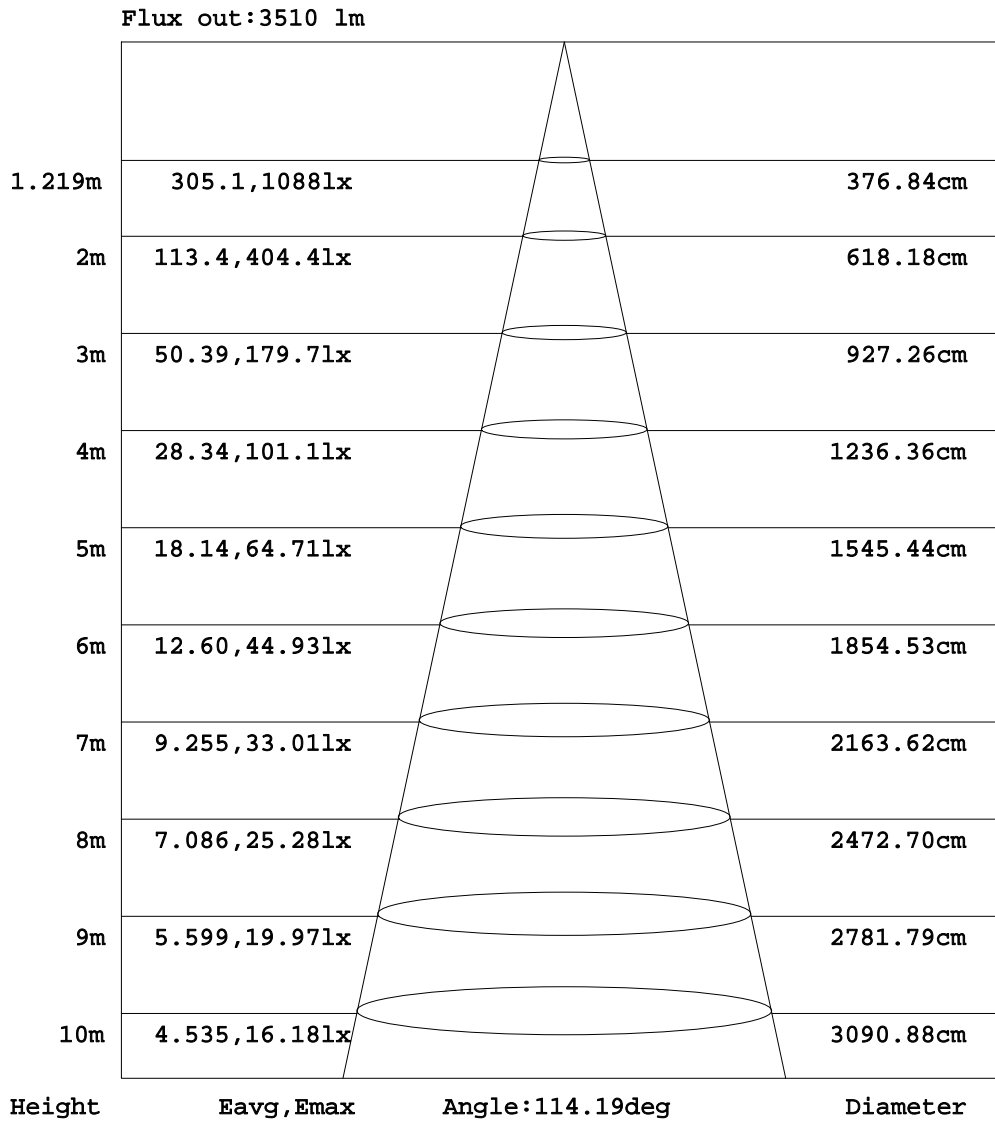
ceiling/cavity	0.7	0.7	0.5	0.5	0.3	0.7	0.7	0.5	0.5	0.3
walls	0.5	0.3	0.5	0.3	0.3	0.5	0.3	0.5	0.3	0.3
working plane	0.2	0.2	0.2	0.2	0.2	0.2	0.2	0.2	0.2	0.2
Room dimensions	Viewed crosswise					Viewed endwise				
x = 2H y = 2H	17.9	19.4	18.2	19.6	19.9	18.0	19.6	18.3	19.8	20.0
3H	19.4	20.9	19.7	21.1	21.3	19.6	21.1	19.9	21.3	21.5
4H	20.0	21.4	20.3	21.6	21.9	20.3	21.6	20.6	21.9	22.1
6H	20.4	21.7	20.8	22.0	22.3	20.8	22.0	21.1	22.3	22.6
8H	20.5	21.8	20.9	22.0	22.3	20.9	22.1	21.3	22.4	22.7
12H	20.5	21.7	20.9	22.0	22.3	21.0	22.2	21.4	22.5	22.8
4H 2H	18.6	19.9	18.9	20.2	20.4	18.7	20.0	19.0	20.3	20.5
3H	20.3	21.5	20.6	21.7	22.1	20.4	21.6	20.8	21.9	22.2
4H	21.0	22.1	21.4	22.4	22.7	21.2	22.3	21.6	22.6	23.0
6H	21.5	22.5	21.9	22.8	23.2	21.8	22.8	22.2	23.1	23.5
8H	21.6	22.5	22.1	22.9	23.3	22.0	22.9	22.5	23.3	23.7
12H	21.7	22.5	22.1	22.9	23.3	22.2	23.0	22.6	23.4	23.8
8H 4H	21.3	22.2	21.7	22.5	22.9	21.5	22.4	21.9	22.8	23.1
6H	22.0	22.7	22.4	23.1	23.5	22.2	23.0	22.7	23.4	23.8
8H	22.2	22.8	22.6	23.3	23.7	22.6	23.2	23.0	23.6	24.1
12H	22.3	22.9	22.8	23.3	23.8	22.8	23.4	23.3	23.8	24.3
12H 4H	21.3	22.1	21.7	22.5	22.9	21.5	22.3	21.9	22.7	23.1
6H	22.0	22.7	22.5	23.1	23.6	22.3	23.0	22.8	23.4	23.8
8H	22.3	22.9	22.8	23.3	23.8	22.7	23.2	23.1	23.7	24.1
Variations with the observer position at spacings:										
S = 1.0H	+ 0.1 / - 0.2					+ 0.1 / - 0.2				
1.5H	+ 0.2 / - 0.3					+ 0.2 / - 0.3				
2.0H	+ 0.2 / - 0.3					+ 0.1 / - 0.3				

CIE Pub.117 Corrected 4704 lm Total Lamp Luminous Flux.(8log(F/F0) = 5.4)

C Range: 0 - 360DEG
 C Interval: 5.0DEG
 Test Speed: HIGH
 Temperature:25.3DEG
 Operators:W.H
 Test Date:2016-07-26

γ Range: 0 - 90DEG
 γ Interval: 0.5DEG
 Test System:EVERFINE GO-2000A_V1 SYSTEM V2.0.352
 Humidity:65.0%
 Test Distance:9.100m [K=1.0000]
 Remarks: 唐 6060

AAI Figure



Note:The Curves indicate the illuminated area and the average illumination when the luminaire is at different distance.

C Range: 0 - 360DEG
 C Interval: 5.0DEG
 Test Speed: HIGH
 Temperature:25.3DEG
 Operators:W.H
 Test Date:2016-07-26

γ Range: 0 - 90DEG
 γ Interval: 0.5DEG
 Test System:EVERFINE GO-2000A_V1 SYSTEM V2.0.352
 Humidity:65.0%
 Test Distance:9.100m [K=1.0000]
 Remarks: 唐 6060

