

Thank you for purchasing our equipment. Please read this manual carefully and heed the safety warnings and instructions before installing, using or repairing the equipment. This will ensure not only the protection of persons, but also the long life of the equipment. The device is designed for installation on walls and ceilings and is suitable for outdoor and indoor use. The package includes both a black and white front cover.

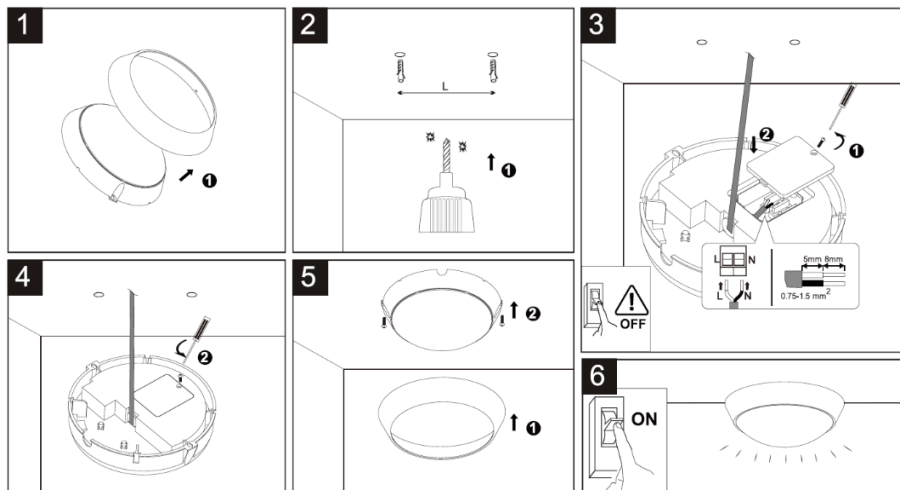
TECHNICAL PARAMETERS

Power	max. 20W
Voltage	220-240V AC
Luminous flux	max. 1800lm
Chromaticity temperature (light temperature)	3000K (warm white - WW), 4000K (neutral white - NW), 6500K (cool white - CW)
LED lifetime	30.000 hours
Sensor detection angle	90°
Detection distance (max.)	max. 8m (up to 24°C)
Setting the light time	10s - 5min.
Light sensitivity setting	3-2000LUX
Protection	IP65
Dimensions	220 x 60 mm

INSTALLATION

Switch off the power supply before installation!

1. Remove the top cover of the luminaire by turning it.
2. Insert the dowels into the pre-drilled holes.
3. Loosen the screw seal and thread the supply cable through. Open the terminal cover and connect the supply cable.
Make sure the connection is correct!
Use the switches inside the luminaire to select the desired chromaticity (light temperature) WW, NW, CW and power consumption 15W, 18W, 20W.
4. Close the terminal cover and tighten the screw clamp.
5. Screw the luminaire to the ceiling and replace the top cover.
6. Switch on the power supply.



PIR SENSOR SETTINGS

1. Turn the PIR sensor cover on the front of the luminaire to reveal the holes for setting the detection distance and light time.
2. To set the desired light time (TIME) and light sensitivity (LUX), turn the switch with the flat head screwdriver.

NOTE: On the PIR sensor cover, LUX and TIME are used to show what the switch is used for.

NOTICE

- Installation must only be carried out by qualified personnel.
- Do not install the device within the reach of children and animals.
- Do not repair or modify the equipment. Repairs may only be carried out by the manufacturer's service centre.
- Stop using the device immediately if it has visible damage or is not working properly.
- Do not use a dimmer with the device.
- Use a suitable cable.

The light source of this luminaire is non-replaceable, at the end of its service life the entire luminaire must be replaced and disposed of in a designated place. This product contains a light source that for design reasons cannot be removed for verification and therefore the entire product is considered a light source.

The product has a CE declaration of conformity in accordance with applicable regulations.

Available on request from the manufacturer: info@solight.cz, or downloadable at www.solight.cz/en.

