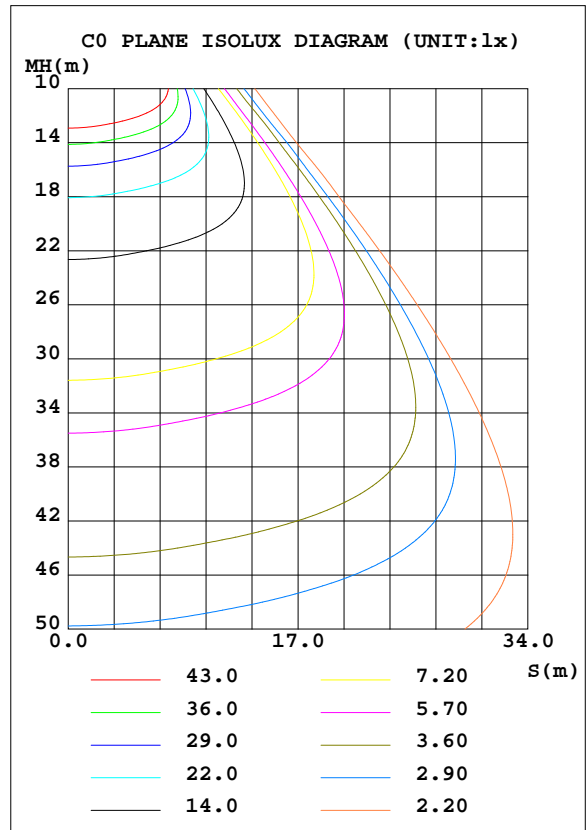
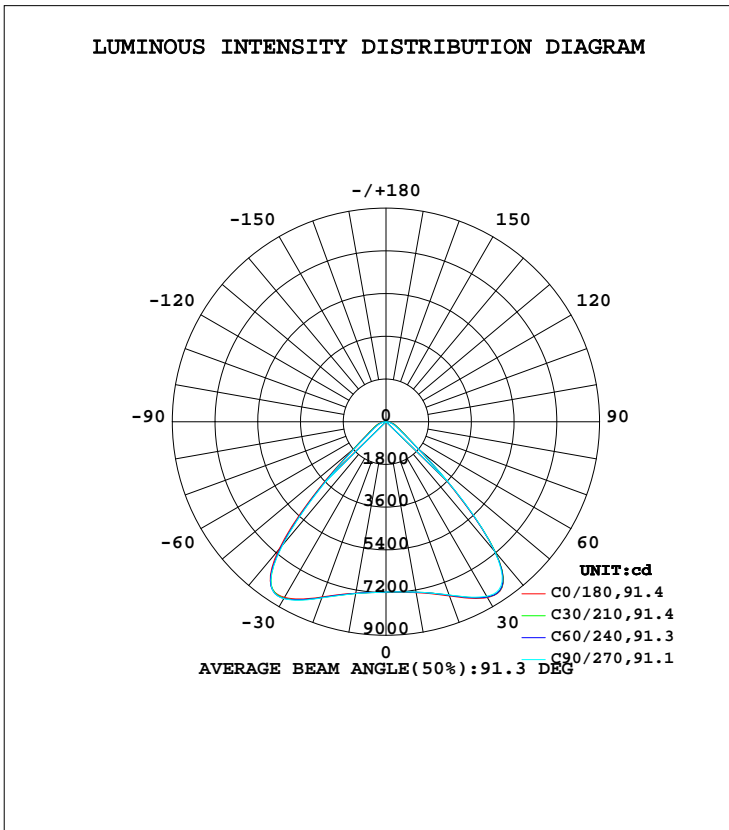


LUMINAIRE PHOTOMETRIC TEST REPORT

Test:U:229.9V I:0.5152A P:116.7W PF:0.9848 Freq:50.01Hz Lamp Flux:16836.1x1 lm		
NAME: 120W-DALI 5000K	TYPE:	WEIGHT:
SPEC.:	DIM.:	SERIAL No.:
MFR.:	SUR.:	Shielding Angle:

DATA OF LAMP		PHOTOMETRIC DATA Eff: 144.31 lm/W			
MODEL	120W	I <sub>max</sub> (cd)	8725	S/MH(C0/180)	1.36
NOMINAL POWER(W)	120	LOR(%)	100.0	S/MH(C90/270)	1.34
RATED VOLTAGE(V)	230	TOTAL FLUX(lm)	16836	η UP, DN(C0-180)	0.4,49.9
NOMINAL FLUX(lm)	16836.1	CIE CLASS	DIRECT	η UP, DN(C180-360)	0.4,49.3
LAMPS INSIDE	1	η up(%)	0.8	CIBSE SHR NOM	1.25
TEST VOLTAGE(V)	230	η down(%)	99.2	CIBSE SHR MAX	1.35



C Range: 0 - 360DEG  
 C Interval: 30.0DEG  
 Test Speed: HIGH  
 Temperature:24.5DEG  
 Operators:  
 Test Date:2018-07-25

γ Range: 0 - 180DEG  
 γ Interval: 1.0DEG  
 Test System:EVERFINE GO-2000A\_V1 SYSTEM V2.0.361  
 Humidity:47.5%  
 Test Distance:10.410m [K=1.0000]  
 Remarks:

ZONAL FLUX DIAGRAM

ZONAL FLUX DIAGRAM:

γ	C0	C45	C90	C135	C180	C225	C270	C315	γ	Φ zone	Φ total	%lum, lamp
10	7315	7293	7290	7311	7338	7344	7353	7347	0- 10	692.0	692.0	4.11,4.11
20	7813	7777	7767	7826	7855	7884	7897	7896	10- 20	2147	2839	16.9,16.9
30	8553	8524	8485	8556	8546	8587	8607	8654	20- 30	3817	6656	39.5,39.5
40	7156	7158	7115	7046	7024	6852	6773	6922	30- 40	5160	11816	70.2,70.2
50	1744	1805	1806	1766	1799	1713	1591	1612	40- 50	3118	14934	88.7,88.7
60	705.9	675.3	617.3	678.4	716.8	669.3	598.3	660.2	50- 60	928.7	15863	94.2,94.2
70	422.0	373.7	317.5	375.4	420.0	378.3	320.6	378.2	60- 70	499.6	16362	97.2,97.2
80	176.1	147.4	93.02	145.9	176.3	148.9	92.62	150.5	70- 80	273.4	16636	98.8,98.8
90	2.465	2.874	2.906	2.595	2.024	2.038	1.536	2.097	80- 90	63.39	16699	99.2,99.2
100	4.684	4.290	3.724	4.049	3.931	3.564	3.140	3.520	90-100	2.790	16702	99.2,99.2
110	11.49	10.93	10.26	10.57	9.600	9.239	8.925	9.258	100-110	6.967	16709	99.2,99.2
120	20.50	20.06	19.62	19.79	17.70	17.31	17.12	17.42	110-120	14.09	16723	99.3,99.3
130	29.70	29.38	28.83	29.14	26.89	26.50	26.17	26.72	120-130	20.83	16744	99.5,99.5
140	38.08	37.40	36.91	37.20	35.55	34.62	34.28	34.75	130-140	24.80	16769	99.6,99.6
150	43.99	44.21	43.88	43.79	41.98	41.25	41.65	41.93	140-150	24.77	16793	99.7,99.7
160	51.65	51.33	50.73	51.07	50.18	49.49	49.38	49.82	150-160	21.31	16815	99.9,99.9
170	61.24	60.14	60.07	60.49	60.64	59.78	59.36	59.66	160-170	15.57	16830	100,100
180	65.23	64.17	64.43	64.42	65.23	64.16	64.40	64.38	170-180	5.942	16836	100,100
DEG	LUMINOUS INTENSITY:cd									UNIT:lm		

Conical surface Flux(90deg): 13853 lm

%lum = 82.3%  
%lamp = 82.3%

Conical surface Flux(120deg): 15863 lm

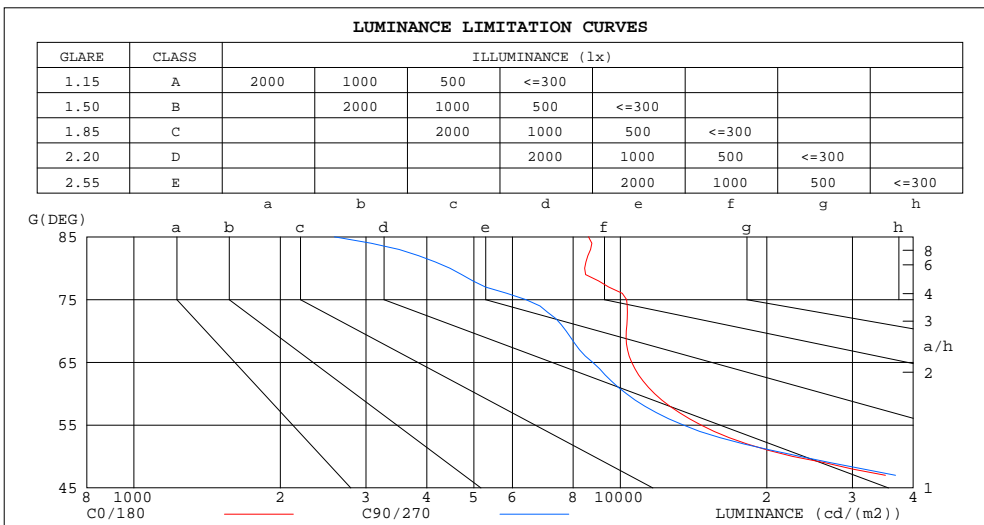
%lum = 94.2%  
%lamp = 94.2%

C Range: 0 - 360DEG  
C Interval: 30.0DEG  
Test Speed: HIGH  
Temperature:24.5DEG  
Operators:  
Test Date:2018-07-25

γ Range: 0 - 180DEG  
γ Interval: 1.0DEG  
Test System:EVERFINE GO-2000A\_V1 SYSTEM V2.0.361  
Humidity:47.5%  
Test Distance:10.410m [K=1.0000]  
Remarks:

LUMINANCE LIMITATION CURVES

Test:U:229.9V I:0.5152A P:116.7W PF:0.9848 Freq:50.01Hz Lamp Flux:16836.1x1 lm		
NAME: 120W-DALI 5000K	TYPE:	WEIGHT:
SPEC.:	DIM.:	SERIAL No.:
MFR.:	SUR.:	Shielding Angle:



LUMINANCE cd/(m2)		
G(DEG)	C0/180	C90/270
85	8599	2585
80	8449	4464
75	10300	6390
70	10282	7736
65	10555	8775
60	11765	10289
55	14656	13476
50	22605	23412
45	47484	49088

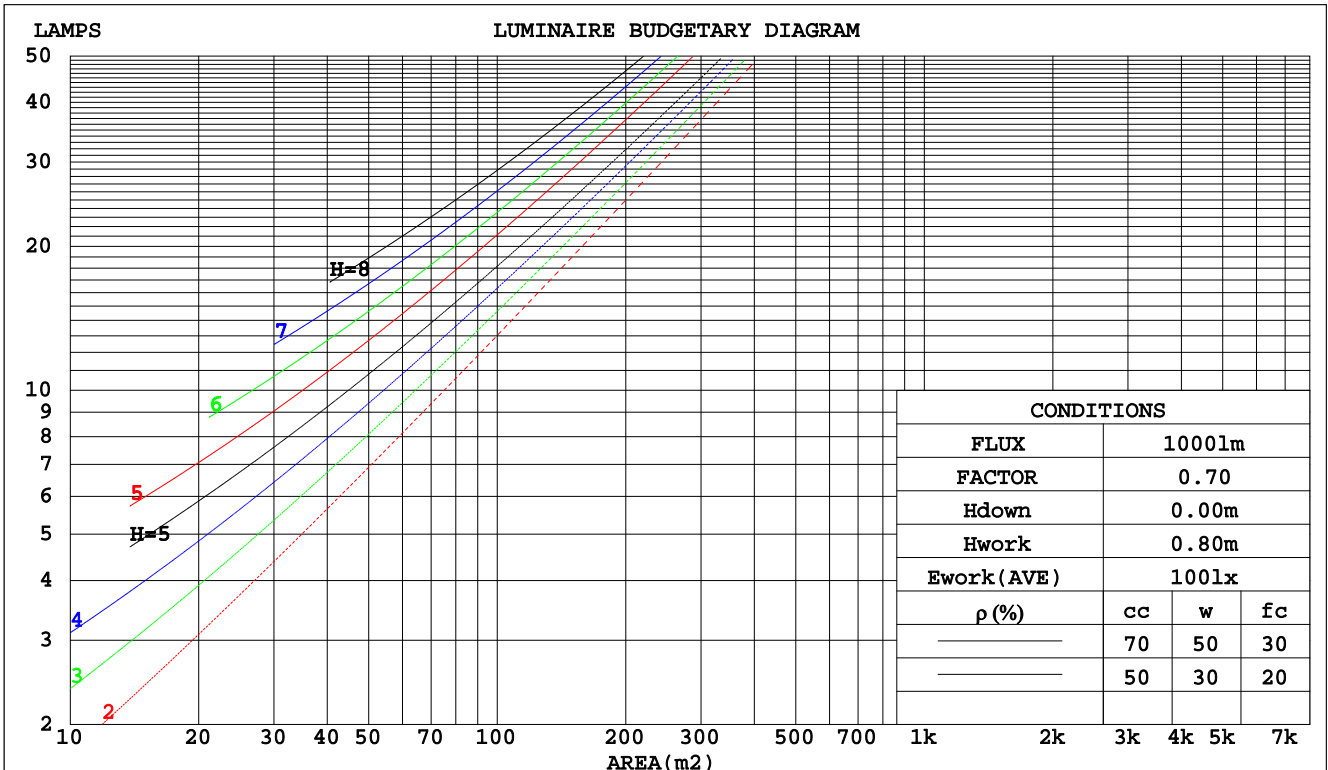
C Range: 0 - 360DEG  
 C Interval: 30.0DEG  
 Test Speed: HIGH  
 Temperature: 24.5DEG  
 Operators:  
 Test Date: 2018-07-25

$\gamma$  Range: 0 - 180DEG  
 $\gamma$  Interval: 1.0DEG  
 Test System: EVERFINE GO-2000A\_V1 SYSTEM V2.0.361  
 Humidity: 47.5%  
 Test Distance: 10.410m [K=1.0000]  
 Remarks:

CU AND LUMINAIRE BUDGETARY ESTIMATE DIAGRAM

Test:U:229.9V I:0.5152A P:116.7W PF:0.9848 Freq:50.01Hz Lamp Flux:16836.1x1 lm		
NAME: 120W-DALI 5000K	TYPE:	WEIGHT:
SPEC.:	DIM.:	SERIAL No.:
MFR.:	SUR.:	Shielding Angle:

pcc	80%			70%			50%			30%			10%			0
	50%	30%	10%	50%	30%	10%	50%	30%	10%	50%	30%	10%	50%	30%	10%	0
pw																0
pfc	20%			20%			20%			20%			20%			0
RCR	RCR:Room Cavity Ratio      Coefficients of Utilization(CU)															
0.0	1.19	1.19	1.19	1.16	1.16	1.16	1.11	1.11	1.11	1.06	1.06	1.06	1.01	1.01	1.01	.99
1.0	1.08	1.05	1.02	1.06	1.03	1.00	1.01	.99	.97	.97	.96	.94	.94	.92	.91	.89
2.0	.98	.92	.88	.96	.91	.87	.92	.88	.85	.89	.86	.83	.86	.83	.81	.79
3.0	.88	.82	.77	.87	.81	.76	.84	.79	.75	.81	.77	.73	.79	.75	.72	.70
4.0	.80	.73	.68	.79	.72	.67	.77	.71	.66	.74	.69	.65	.72	.68	.65	.63
5.0	.73	.66	.60	.72	.65	.60	.70	.64	.59	.68	.63	.59	.66	.62	.58	.56
6.0	.67	.59	.54	.66	.59	.54	.64	.58	.53	.63	.57	.53	.61	.56	.52	.50
7.0	.61	.54	.48	.60	.53	.48	.59	.53	.48	.58	.52	.48	.56	.51	.47	.45
8.0	.56	.49	.44	.56	.49	.44	.54	.48	.43	.53	.47	.43	.52	.47	.43	.41
9.0	.52	.45	.40	.51	.44	.40	.50	.44	.39	.49	.43	.39	.48	.43	.39	.37
10.0	.48	.41	.36	.48	.41	.36	.47	.40	.36	.46	.40	.36	.45	.39	.36	.34



C Range: 0 - 360DEG  
 C Interval: 30.0DEG  
 Test Speed: HIGH  
 Temperature:24.5DEG  
 Operators:  
 Test Date:2018-07-25

γ Range: 0 - 180DEG  
 γ Interval: 1.0DEG  
 Test System:EVERFINE GO-2000A\_V1 SYSTEM V2.0.361  
 Humidity:47.5%  
 Test Distance:10.410m [K=1.0000]  
 Remarks:

WEC AND CCEC

Test:U:229.9V I:0.5152A P:116.7W PF:0.9848 Freq:50.01Hz Lamp Flux:16836.1x1 lm														
NAME: 120W-DALI 5000K					TYPE:					WEIGHT:				
SPEC.:					DIM.:					SERIAL No.:				
MFR.:					SUR.:					Shielding Angle:				

ρcc	80%			70%			50%			30%			10%			0
ρw	50%	30%	10%	50%	30%	10%	50%	30%	10%	50%	30%	10%	50%	30%	10%	0
ρfc	20%			20%			20%			20%			20%			0
RCR	RCR:Room Cavity Ratio						Wall Exitance Coefficients(WEC)									
0.0																
1.0	.228	.130	.041	.221	.126	.040	.208	.119	.038	.196	.113	.036	.184	.107	.034	
2.0	.221	.121	.037	.215	.118	.036	.203	.113	.035	.193	.108	.034	.183	.104	.033	
3.0	.211	.112	.034	.205	.110	.033	.195	.106	.032	.186	.102	.031	.177	.098	.030	
4.0	.200	.104	.031	.195	.102	.030	.186	.099	.030	.178	.096	.029	.171	.093	.028	
5.0	.189	.097	.028	.185	.095	.028	.177	.092	.027	.170	.090	.027	.163	.087	.026	
6.0	.180	.090	.026	.176	.089	.026	.169	.087	.025	.162	.084	.025	.156	.082	.024	
7.0	.170	.084	.024	.167	.083	.024	.161	.081	.023	.155	.079	.023	.149	.078	.023	
8.0	.162	.079	.022	.159	.078	.022	.153	.077	.022	.148	.075	.022	.143	.073	.021	
9.0	.154	.074	.021	.151	.074	.021	.146	.072	.020	.141	.071	.020	.137	.069	.020	
10.0	.147	.070	.020	.144	.070	.019	.140	.068	.019	.135	.067	.019	.131	.066	.019	

ρcc	80%			70%			50%			30%			10%			0
ρw	50%	30%	10%	50%	30%	10%	50%	30%	10%	50%	30%	10%	50%	30%	10%	0
ρfc	20%			20%			20%			20%			20%			0
RCR	RCR:Room Cavity Ratio						Ceiling Cavity Exitance Coefficients(CCEC)									
0.0	.197	.197	.197	.168	.168	.168	.115	.115	.115	.066	.066	.066	.021	.021	.021	
1.0	.181	.163	.147	.155	.140	.127	.106	.096	.088	.061	.056	.051	.020	.018	.016	
2.0	.169	.139	.113	.145	.119	.098	.099	.083	.068	.057	.048	.040	.018	.016	.013	
3.0	.159	.120	.089	.137	.104	.077	.094	.072	.054	.054	.042	.032	.017	.014	.010	
4.0	.151	.106	.072	.130	.092	.063	.089	.064	.044	.052	.037	.026	.017	.012	.009	
5.0	.144	.095	.060	.123	.082	.052	.085	.058	.037	.049	.034	.022	.016	.011	.007	
6.0	.137	.087	.050	.118	.075	.044	.081	.053	.031	.047	.031	.018	.015	.010	.006	
7.0	.131	.080	.043	.113	.069	.038	.078	.048	.027	.045	.028	.016	.015	.009	.005	
8.0	.126	.074	.038	.108	.064	.033	.075	.045	.024	.044	.026	.014	.014	.009	.005	
9.0	.120	.069	.034	.104	.060	.030	.072	.042	.021	.042	.025	.013	.014	.008	.004	
10.0	.116	.065	.031	.100	.056	.027	.069	.039	.019	.040	.023	.011	.013	.008	.004	

C Range: 0 - 360DEG  
 C Interval: 30.0DEG  
 Test Speed: HIGH  
 Temperature:24.5DEG  
 Operators:  
 Test Date:2018-07-25

γ Range: 0 - 180DEG  
 γ Interval: 1.0DEG  
 Test System:EVERFINE GO-2000A\_V1 SYSTEM V2.0.361  
 Humidity:47.5%  
 Test Distance:10.410m [K=1.0000]  
 Remarks:

UGR(Unified Glare Rating) Table

Test:U:229.9V I:0.5152A P:116.7W PF:0.9848 Freq:50.01Hz Lamp Flux:16836.1x1 lm										
NAME: 120W-DALI 5000K					TYPE:			WEIGHT:		
SPEC.:					DIM.:			SERIAL No.:		
MFR.:					SUR.:			Shielding Angle:		
ceiling/cavity	0.7	0.7	0.5	0.5	0.3	0.7	0.7	0.5	0.5	0.3
walls	0.5	0.3	0.5	0.3	0.3	0.5	0.3	0.5	0.3	0.3
working plane	0.2	0.2	0.2	0.2	0.2	0.2	0.2	0.2	0.2	0.2
Room dimensions	Viewed crosswise					Viewed endwise				
x = 2H y = 2H	13.3	14.5	13.5	14.7	14.9	13.2	14.4	13.5	14.6	14.8
3H	13.4	14.5	13.7	14.8	15.0	13.2	14.4	13.5	14.6	14.8
4H	13.5	14.6	13.8	14.8	15.1	13.2	14.3	13.5	14.5	14.8
6H	13.6	14.6	13.9	14.8	15.1	13.2	14.2	13.5	14.5	14.7
8H	13.6	14.5	13.9	14.8	15.1	13.2	14.1	13.5	14.4	14.7
12H	13.6	14.5	13.9	14.8	15.1	13.1	14.0	13.5	14.3	14.6
4H 2H	13.1	14.2	13.4	14.5	14.7	13.1	14.1	13.4	14.4	14.6
3H	13.4	14.3	13.8	14.6	14.9	13.2	14.1	13.5	14.4	14.7
4H	13.6	14.4	14.0	14.7	15.1	13.3	14.1	13.6	14.4	14.7
6H	13.7	14.5	14.1	14.8	15.2	13.3	14.0	13.7	14.4	14.7
8H	13.8	14.5	14.2	14.8	15.2	13.3	13.9	13.7	14.3	14.7
12H	13.8	14.5	14.3	14.8	15.3	13.2	13.8	13.7	14.2	14.6
8H 4H	13.6	14.2	14.0	14.6	15.0	13.2	13.9	13.7	14.3	14.7
6H	13.8	14.3	14.2	14.8	15.2	13.3	13.9	13.8	14.3	14.7
8H	13.9	14.4	14.4	14.8	15.3	13.3	13.8	13.8	14.2	14.7
12H	14.0	14.4	14.5	14.8	15.3	13.3	13.7	13.8	14.2	14.7
12H 4H	13.5	14.2	14.0	14.5	15.0	13.2	13.8	13.6	14.2	14.6
6H	13.8	14.3	14.2	14.7	15.2	13.3	13.8	13.8	14.2	14.7
8H	13.9	14.3	14.4	14.8	15.2	13.3	13.7	13.8	14.2	14.7
Variations with the observer position at spacings:										
S = 1.0H	+ 1.7 / - 3.0					+ 1.9 / - 3.9				
1.5H	+ 2.7 / - 3.0					+ 2.9 / - 3.7				
2.0H	+ 4.0 / - 1.7					+ 4.7 / - 2.5				

CIE Pub.117, 16836 lm Total Lamp Luminous Flux Correct (8log(F/F0) = 9.8)

C Range: 0 - 360DEG  
 C Interval: 30.0DEG  
 Test Speed: HIGH  
 Temperature:24.5DEG  
 Operators:  
 Test Date:2018-07-25

γ Range: 0 - 180DEG  
 γ Interval: 1.0DEG  
 Test System:EVERFINE GO-2000A\_V1 SYSTEM V2.0.361  
 Humidity:47.5%  
 Test Distance:10.410m [K=1.0000]  
 Remarks:

**UTILIZATION FACTORS TABLE**

Test:U:229.9V I:0.5152A P:116.7W PF:0.9848 Freq:50.01Hz Lamp Flux:16836.1x1 lm		
NAME: 120W-DALI 5000K	TYPE:	WEIGHT:
SPEC.:	DIM.:	SERIAL No.:
MFR.:	SUR.:	Shielding Angle:

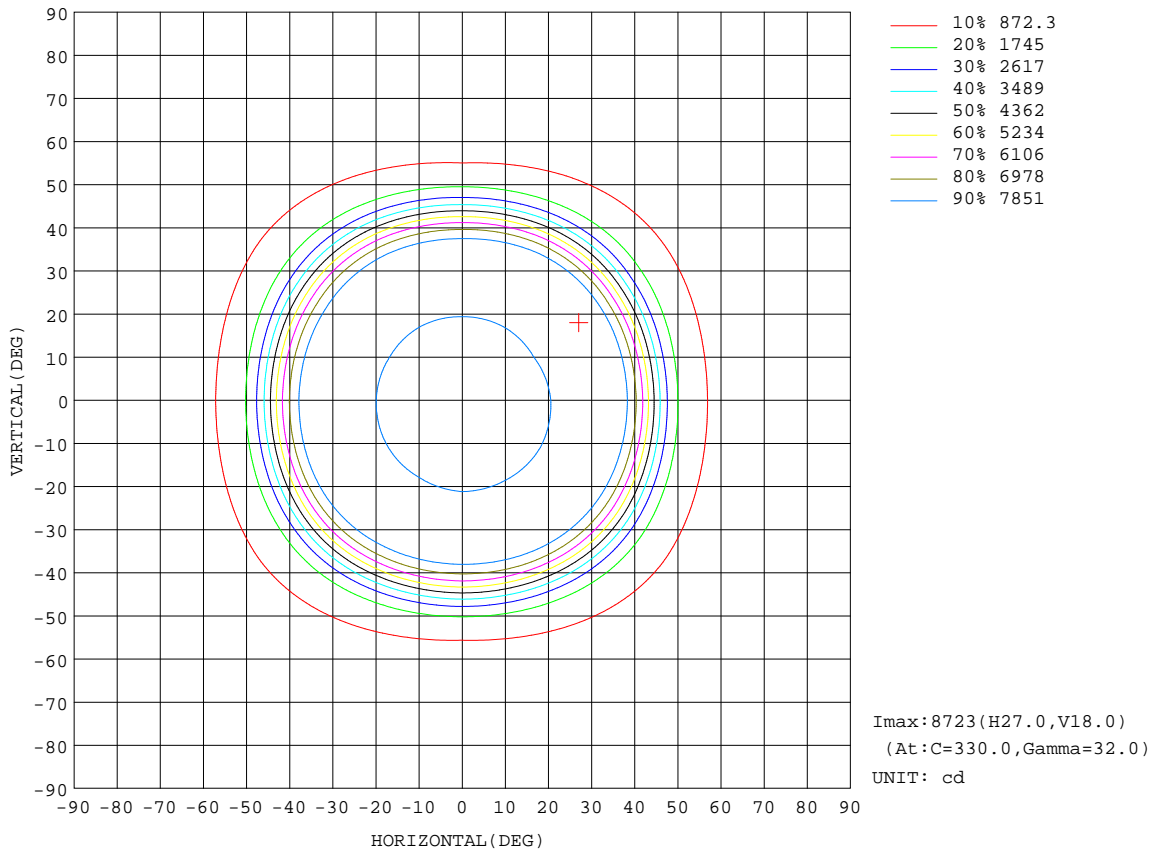
REFLECTANCE										
Ceiling	0.8	0.8	0.8	0.7	0.7	0.7	0.5	0.5	0.5	0
Walls	0.7	0.5	0.3	0.7	0.5	0.3	0.7	0.5	0.3	0
Working plane	0.2	0.2	0.2	0.2	0.2	0.2	0.2	0.2	0.2	0
ROOM INDEX	UTILIZATION FACTORS(PERCENT) $k(RI) \times RCR = 5$									
k = 0.60	73	64	59	72	64	59	71	63	58	53
0.80	82	74	68	81	73	68	80	73	68	63
1.00	89	81	76	88	81	76	86	81	75	70
1.25	95	88	83	94	87	82	91	86	81	76
1.50	99	92	87	97	91	87	95	89	85	80
2.00	103	98	93	102	96	92	99	94	91	84
2.50	106	100	96	104	99	95	100	97	93	86
3.00	108	103	100	106	102	98	102	99	96	89
4.00	111	107	104	108	105	102	104	102	99	91
5.00	112	109	106	110	107	105	106	103	101	93
ROOM INDEX	UF(total)									Direct
According to DIN EN 13032-2 2004			Suspended				SHRNOM = 1.25			

C Range: 0 - 360DEG  
 C Interval: 30.0DEG  
 Test Speed: HIGH  
 Temperature:24.5DEG  
 Operators:  
 Test Date:2018-07-25

$\gamma$  Range: 0 - 180DEG  
 $\gamma$  Interval: 1.0DEG  
 Test System:EVERFINE GO-2000A\_V1 SYSTEM V2.0.361  
 Humidity:47.5%  
 Test Distance:10.410m [K=1.0000]  
 Remarks:

ISOCANDELA DIAGRAM

Test:U:229.9V I:0.5152A P:116.7W PF:0.9848 Freq:50.01Hz Lamp Flux:16836.1x1 lm		
NAME: 120W-DALI 5000K	TYPE:	WEIGHT:
SPEC.:	DIM.:	SERIAL No.:
MFR.:	SUR.:	Shielding Angle:



C Range: 0 - 360DEG  
 C Interval: 30.0DEG  
 Test Speed: HIGH  
 Temperature:24.5DEG  
 Operators:  
 Test Date:2018-07-25

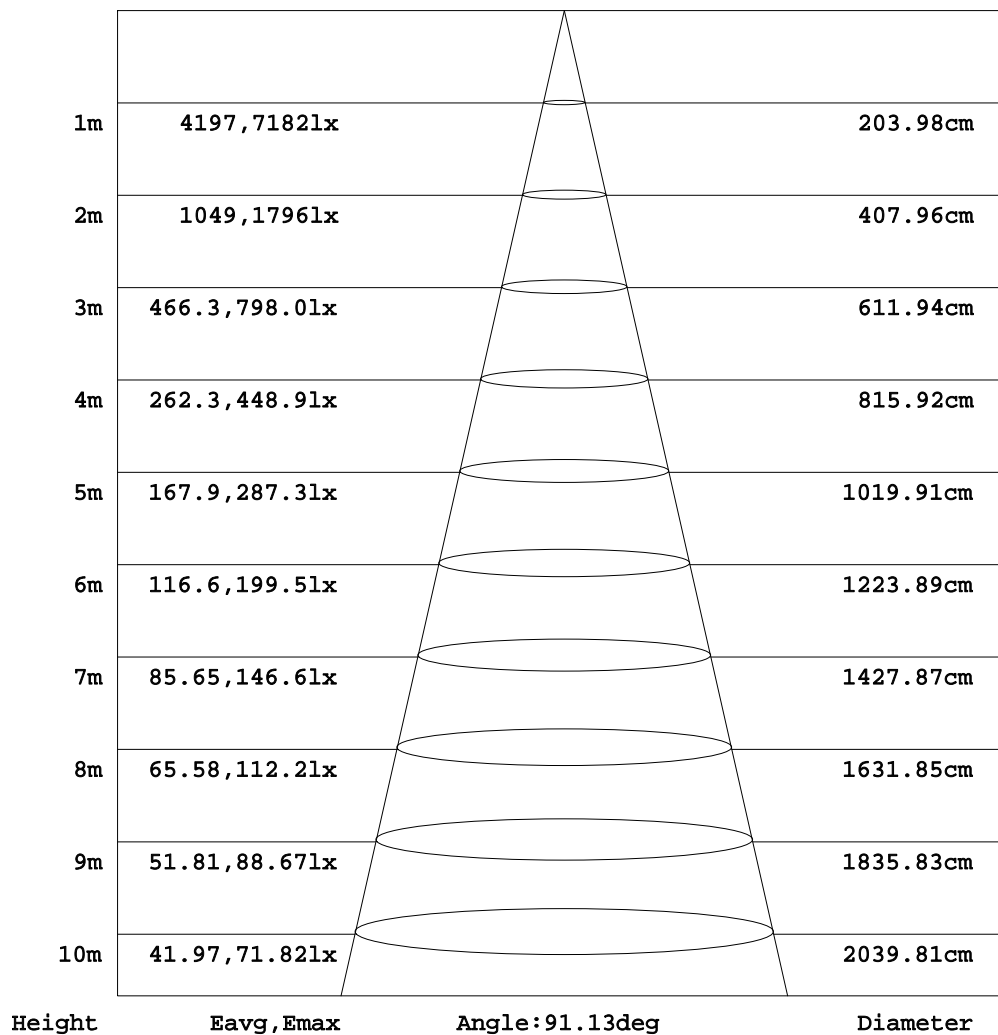
γ Range: 0 - 180DEG  
 γ Interval: 1.0DEG  
 Test System:EVERFINE GO-2000A\_V1 SYSTEM V2.0.361  
 Humidity:47.5%  
 Test Distance:10.410m [K=1.0000]  
 Remarks:



AAI Figure

Test:U:229.9V I:0.5152A P:116.7W PF:0.9848 Freq:50.01Hz Lamp Flux:16836.1x1 lm		
NAME: 120W-DALI 5000K	TYPE:	WEIGHT:
SPEC.:	DIM.:	SERIAL No.:
MFR.:	SUR.:	Shielding Angle:

Flux out:14138 lm



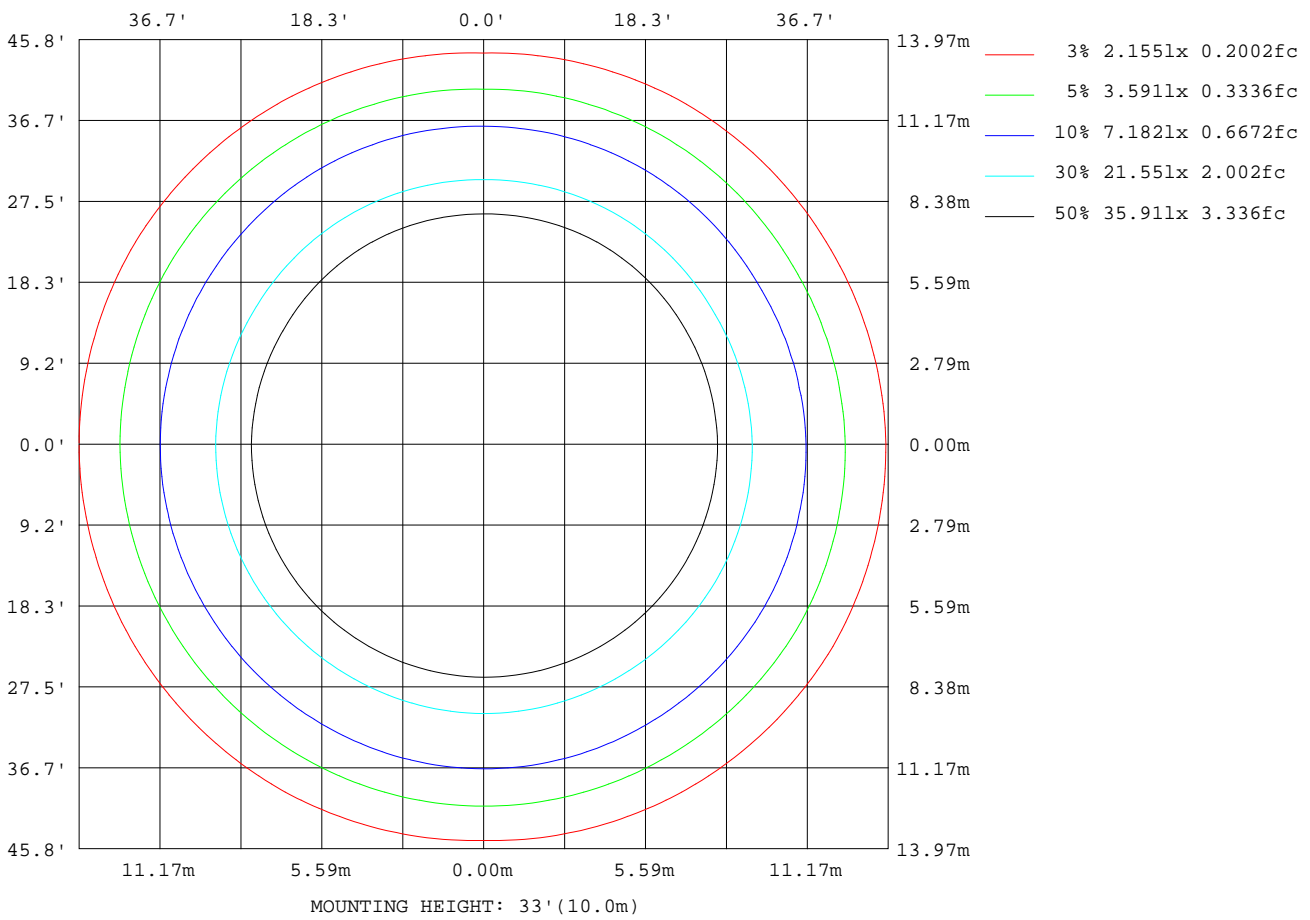
Note:The Curves indicate the illuminated area and the average illumination when the luminaire is at different distance.

C Range: 0 - 360DEG  
 C Interval: 30.0DEG  
 Test Speed: HIGH  
 Temperature:24.5DEG  
 Operators:  
 Test Date:2018-07-25

γ Range: 0 - 180DEG  
 γ Interval: 1.0DEG  
 Test System:EVERFINE GO-2000A\_V1 SYSTEM V2.0.361  
 Humidity:47.5%  
 Test Distance:10.410m [K=1.0000]  
 Remarks:

ISOLUX DIAGRAM

Test:U:229.9V I:0.5152A P:116.7W PF:0.9848 Freq:50.01Hz Lamp Flux:16836.1x1 lm		
NAME: 120W-DALI 5000K	TYPE:	WEIGHT:
SPEC.:	DIM.:	SERIAL No.:
MFR.:	SUR.:	Shielding Angle:



C Range: 0 - 360DEG  
 C Interval: 30.0DEG  
 Test Speed: HIGH  
 Temperature: 24.5DEG  
 Operators:  
 Test Date: 2018-07-25

γ Range: 0 - 180DEG  
 γ Interval: 1.0DEG  
 Test System: EVERFINE GO-2000A\_V1 SYSTEM V2.0.361  
 Humidity: 47.5%  
 Test Distance: 10.410m [K=1.0000]  
 Remarks:

LED Avg.L Report

Test:U:229.9V I:0.5152A P:116.7W PF:0.9848 Freq:50.01Hz Lamp Flux:16836.1x1 lm		
NAME: 120W-DALI 5000K	TYPE:	WEIGHT:
SPEC.:	DIM.:	SERIAL No.:
MFR.:	SUR.:	Shielding Angle:

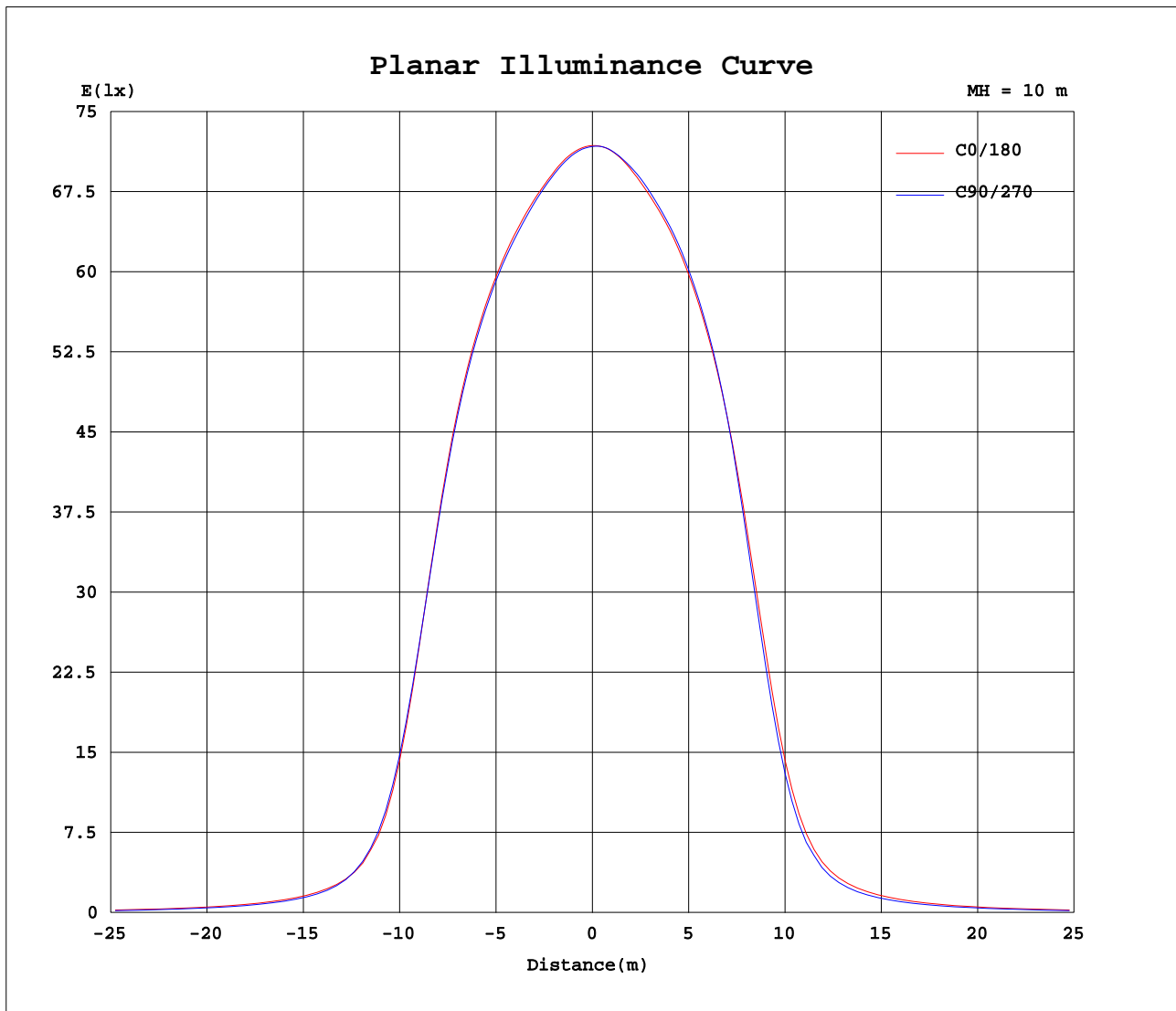
AvgL	cd/m2
L_0~180(65)av	10602
L_0~180(75)av	10245
L_0~180(85)av	8563
L_90~270(65)av	8763
L_90~270(75)av	6362
L_90~270(85)av	2530
L_45(65)av	9916
L_45(75)av	8515
L_45(85)av	4281

Standard: GB/T 29293-2012

C Range: 0 - 360DEG  
 C Interval: 30.0DEG  
 Test Speed: HIGH  
 Temperature:24.5DEG  
 Operators:  
 Test Date:2018-07-25

γ Range: 0 - 180DEG  
 γ Interval: 1.0DEG  
 Test System:EVERFINE GO-2000A\_V1 SYSTEM V2.0.361  
 Humidity:47.5%  
 Test Distance:10.410m [K=1.0000]  
 Remarks:

Planar Illuminance Curve



C Range: 0 - 360DEG  
 C Interval: 30.0DEG  
 Test Speed: HIGH  
 Temperature: 24.5DEG  
 Operators:  
 Test Date: 2018-07-25

γ Range: 0 - 180DEG  
 γ Interval: 1.0DEG  
 Test System: EVERFINE GO-2000A\_V1 SYSTEM V2.0.361  
 Humidity: 47.5%  
 Test Distance: 10.410m [K=1.0000]  
 Remarks:

LUMINOUS DISTRIBUTION INTENSITY DATA

Test:U:229.9V I:0.5152A P:116.7W PF:0.9848 Freq:50.01Hz Lamp Flux:16836.1x1 lm		
NAME: 120W-DALI 5000K	TYPE:	WEIGHT:
SPEC.:	DIM.:	SERIAL No.:
MFR.:	SUR.:	Shielding Angle:

Table--1

UNIT: cd

C(DEG)\ γ (DEG)	0	30	60	90	120	150	180	210	240	270	300	330							
0	7182	7177	7175	7174	7175	7177	7182	7177	7175	7174	7175	7177							
5	7212	7196	7197	7195	7206	7204	7227	7226	7224	7230	7218	7219							
10	7315	7293	7292	7290	7308	7314	7338	7347	7340	7353	7345	7349							
15	7508	7475	7479	7478	7508	7523	7538	7571	7560	7579	7570	7568							
20	7813	7776	7778	7767	7819	7832	7855	7886	7882	7897	7891	7902							
25	8200	8160	8169	8147	8200	8225	8236	8274	8267	8294	8295	8309							
30	8553	8523	8524	8485	8542	8569	8546	8581	8594	8607	8642	8665							
35	8527	8514	8501	8450	8461	8493	8440	8416	8452	8432	8534	8563							
40	7156	7176	7140	7115	7042	7049	7024	6841	6864	6773	6913	6932							
45	4029	4137	4124	4165	4039	4006	4036	3855	3825	3688	3730	3697							
50	1744	1819	1791	1806	1766	1766	1799	1746	1679	1591	1609	1614							
55	1009	1022	981	928	983	1018	1035	1012	952	873	935	966							
60	706	707	644	617	644	712	717	704	634	598	630	691							
65	535	532	469	445	470	540	540	533	468	444	468	532							
70	422	404	343	317	342	409	420	410	347	321	346	411							
75	320	287	237	198	233	289	316	289	241	197	241	293							
80	176	168	127	93.0	124	168	176	170	128	92.6	130	171							
85	89.9	60.7	33.8	27.0	31.5	59.3	89.2	60.7	32.3	25.9	33.3	58.3							
90	2.46	3.00	2.75	2.91	2.45	2.74	2.02	2.28	1.80	1.54	1.93	2.26							
95	2.87	2.84	2.42	2.26	2.35	2.71	2.49	2.34	2.10	1.88	2.06	2.33							
100	4.68	4.55	4.03	3.72	3.85	4.25	3.93	3.74	3.39	3.14	3.32	3.72							
105	7.61	7.36	6.82	6.41	6.57	6.93	6.32	6.13	5.74	5.52	5.67	6.15							
110	11.5	11.2	10.7	10.3	10.4	10.7	9.60	9.43	9.05	8.92	9.02	9.49							
115	15.9	15.6	15.2	14.8	15.0	15.2	13.5	13.3	12.9	12.9	12.9	13.4							
120	20.5	20.2	19.9	19.6	19.7	19.9	17.7	17.5	17.2	17.1	17.2	17.6							
125	25.1	24.9	24.6	24.3	24.5	24.6	22.3	22.0	21.7	21.6	21.8	22.3							
130	29.7	29.6	29.2	28.8	29.1	29.2	26.9	26.7	26.3	26.2	26.5	27.0							
135	34.1	33.9	33.3	33.0	33.2	33.6	31.6	31.1	30.5	30.4	30.6	31.3							
140	38.1	37.7	37.1	36.9	37.0	37.4	35.5	35.0	34.3	34.3	34.4	35.1							
145	41.3	41.1	40.8	40.5	40.7	40.8	39.0	38.3	38.0	38.1	38.3	38.6							
150	44.0	44.2	44.2	43.9	43.9	43.7	42.0	41.2	41.3	41.6	42.0	41.9							
155	47.1	47.4	47.3	46.8	46.9	46.8	45.4	44.7	44.7	45.0	45.4	45.3							
160	51.7	51.5	51.2	50.7	51.2	50.9	50.2	49.4	49.5	49.4	49.8	49.9							
165	56.8	56.1	55.7	55.5	56.2	55.8	55.9	54.9	55.0	54.6	54.9	55.1							
170	61.2	60.2	60.1	60.1	60.8	60.2	60.6	59.7	59.9	59.4	59.6	59.7							
175	64.2	63.0	63.2	63.4	63.8	63.2	64.0	62.7	63.4	63.0	63.1	63.0							
180	65.2	63.9	64.4	64.4	64.6	64.3	65.2	63.9	64.4	64.4	64.5	64.2							

C Range: 0 - 360DEG  
 C Interval: 30.0DEG  
 Test Speed: HIGH  
 Temperature:24.5DEG  
 Operators:  
 Test Date:2018-07-25

γ Range: 0 - 180DEG  
 γ Interval: 1.0DEG  
 Test System:EVERFINE GO-2000A\_V1 SYSTEM V2.0.361  
 Humidity:47.5%  
 Test Distance:10.410m [K=1.0000]  
 Remarks: